

RushMachinery

Grind better.



Wheel Dressing Machines

Simple to operate, highly accurate and cost effective

For truing and dressing of flats, angles, and radii on diamond and CBN single and multiple wheel packs.

*Operator console
and monitor pivot
to front of machine*

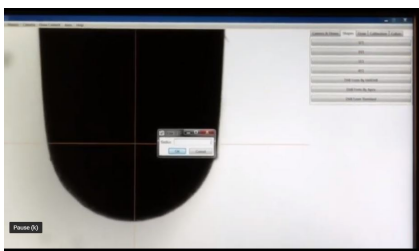
*Large Dust Collector
cup with LED Lighting*

Model FC-350W

*Heavy Duty Cast
Iron Base for most
rigid foundation*

RushVision

with optional AutoView



- **Auto-View:** Used to move the camera over a feature of interest, saving time and increasing accuracy
- **High Magnification:** Three magnification systems (camera and optics) to choose from

***Dress both the diameter and the side of the wheels without taking the wheel packs apart!
Dressing wheel pivots +15/-10 degrees. Can dress up to 5 degrees back taper between wheels.***



Our proven
commitment to
quality, service,
and innovation has
made us an
industry leader
since 1983.



Model FC-350EX

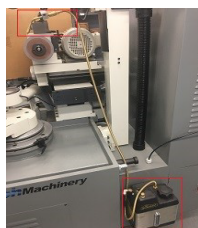
*EX models are
fully enclosed and
are PLC controlled*

*The larger FC-700W
and FC-700EX for
wheels up to 28"*



Model FC-700W

Options and accessories:



Mist Coolant Option: Apply coolant directly to the diamond wheel surface to improve bond removal and increase dressing efficiency.



Dust Collection System: A 500 CFM dust collector removes the majority of the grinding wheel dust.



Spindles: BT40, HSK50E, HSK50A/C, HSK63A/C, BT50, Walter Power, Sopko and more.



Adapters: Over 130 designs for virtually any grinder made. The most popular items are in stock.



On Machine Balancing: Essential for precision applications

FC-350W Guarding: 4 clear acrylic pivoting sections allow for easy access. Retrofit available, performed by a Rush service engineer.



Rush Machinery provides top quality products and service that help people grind better.

Rush Machinery Wheel Truing and Dressing Machines - Specifications

Model:		FC-350W	FC-350EX	FC-700W	FC-700EX
Spindle Options:		BT40 / BT50 / HSK50A/C / HSK50E / Walter Power / Sopko / Others Available			
		Standard Features:			
Diamond/CBN wheel	Min. diameter:	0" (0 mm)			
	Diameter range	Adjustable ranges from 0-14" (350 mm) and 2"-16" (400 mm)		28" (700 mm) or 42" (1070 mm) larger capacity option	
	Max. width	3" (76 mm)		4" (100 mm)	
	Max. wheel pack length (OAL)	8" (203 mm)			
	Speed (Infinitely variable & reversible)	100-1200 rpm			
	Motor power	2 hp (1.5 kW)		3 hp (2.2 kW)	
	Radius	0 to 2-7/8" (0 to 73 mm)			
	X axis travel	8-3/4" (222 mm)		7-7/8" (200 mm)	
	Y axis travel	7-1/2" (190 mm)		15" (380 mm)	
	Optical linear scales with display counter for X & Y axes	0.0001" (0.002 mm) increments			
Maximum wheel/wheel pack and adapter weight		ISO40: 175 lbs (80 kg) / HSK50A/C/E: 55 lbs (25 kg) / ISO50: 265 pounds (120 Kg)			
Truing/Dressing wheel	Maximum Dimensions	10" (254 mm) dia., 3/4" (19 mm) wide, 1-1/4" (31.75mm) bore		10" (254 mm) dia., 1" (25.4 mm) wide, 1-1/4" (31.75 mm) bore	
	Pivoting Dressing Wheel Head for dressing hard-to-reach points	+15°/-10°			
	Speed (Infinitely variable)	200- 2400 rpm			
	Oscillation frequency (Infinitely variable)	0-50 strokes/minute (63 RPM)			
	Oscillation stroke	0 to 3-1/2" (0 to 89 mm)		0 to 4-1/2" (0 to 120 mm)	
	Oscillation lockout brake	Standard	N/A	Standard	N/A
	Motor power	1 hp (0.75 kW)		2 hp (1.5 kW)	
	Dressing wheel swiveling and infeed	Manual	Automatic	Manual	Automatic
	Angular reader	0.035° increments			
	Infeed axis travel	3-1/4" (85 mm)		5-7/8" (150 mm)	
	Machine Weight	2,200 lbs (1,000 kg)	2,400 lbs (1,090 kg)	4,410 lbs (2,000 kg)	4,910 lbs (2,240 kg)
	Crated Weight	2,800 lbs (1,270 kg)	3,000 lbs (1,360 kg)	4,410 lbs (2,000 kg)	5,025 lbs (2,280 kg)
	Electrical system	200/220-240 V or 440V-480V, 3-phase, 50/60 Hz			
	Instruction and parts manual	Standard			
	One-year limited warranty	Standard			
		RushVision Features:			
Preset automatic power zooming control system:					
10X, 30X & 60X		Standard			
30X, 60X & 120X or custom		Option			
High resolution B/W camera		Standard			
CAD drawing of diamond wheel profiles		Standard			
Industrial PC, Windows OS, solid-state drive & 22" HD monitor		Standard			
Sealed LED Ring Light		Standard			
Machine setup and training by Rush Personnel		Standard			
		Additional equipment:			
Dust Collection System		Option			
Mist Coolant System		Option			
Auto-View camera positioning		Option	Standard	Option	Standard
On Machine Balancing		Option	Option	Option	Option
FC-350W Guarding		Option	N/A	N/A	N/A

RushMachinery

4761 NY-364 • Rushville, New York • 14544 • USA

Tel: (800) 929-3070 (US & Canada) • (585) 554-3070 • Fax: +1 (585) 554-4077

Email: mail@rushmachinery.com • www.rushmachinery.com